

Using BV10's Form Wizard

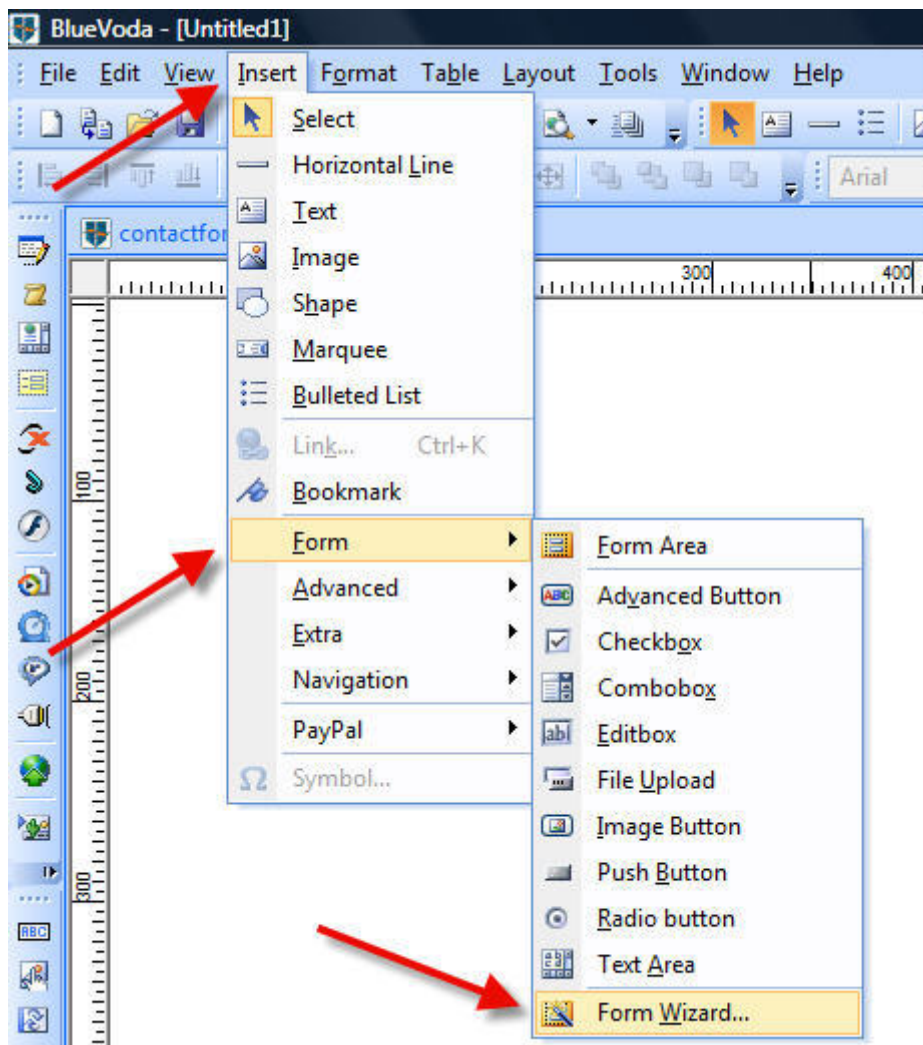


By Navaldesign, <http://www.dbtechnosystems.com>

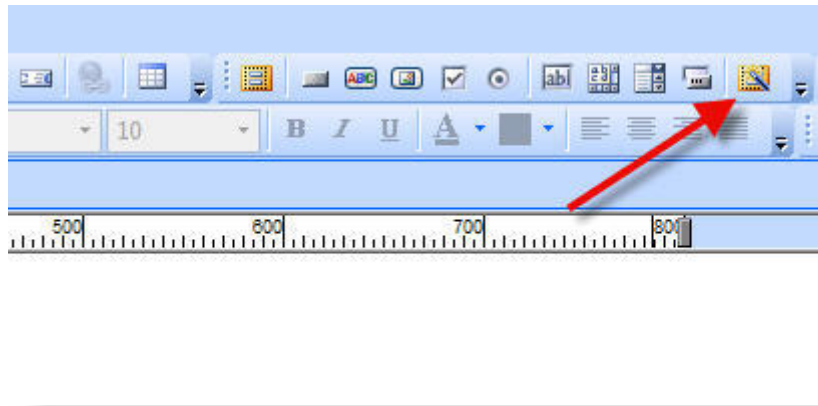
The new **BlueVoda** website builder, now comes with a brand new Form Wizard that will help you easily build your forms! The package includes a variety of pre-configured forms that you can embed in your page with just a few clicks. Let's see how you can achieve this goal, as well as some tips that will help you customize your form as required:

Open the form Wizard

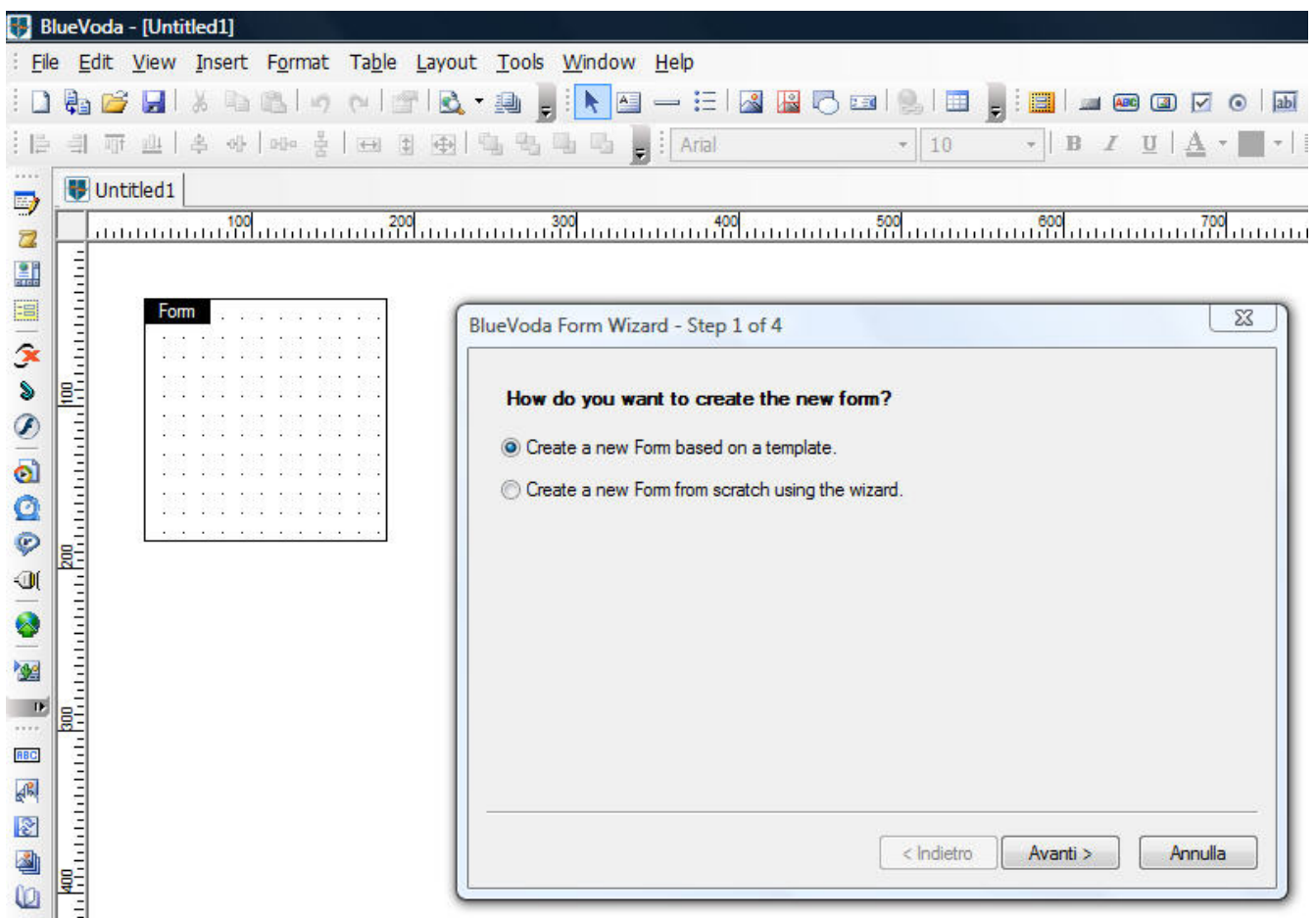
You can do so by clicking on the main menu: Insert -> Form -> Form Wizard as you see it in the following image:



However, it is faster if you click directly on the Form Wizard icon, in the Forms Toolbar. Of course you need to have this toolbar set to visible (View -> Toolbars -> Form Tools), as you can see in this other image:



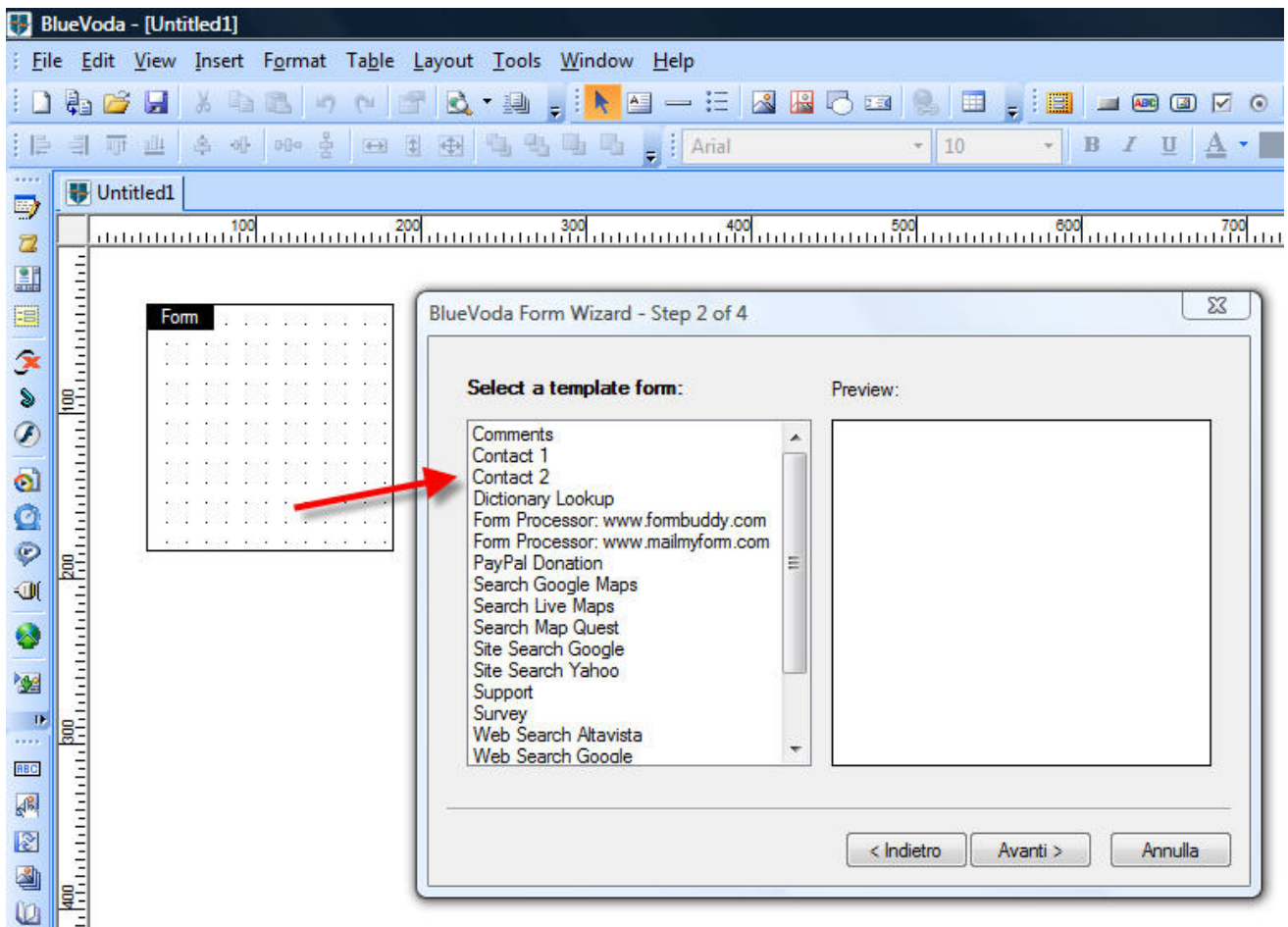
As soon as you do, you will see the following screen:



So you have two different options. Let's start describing them:

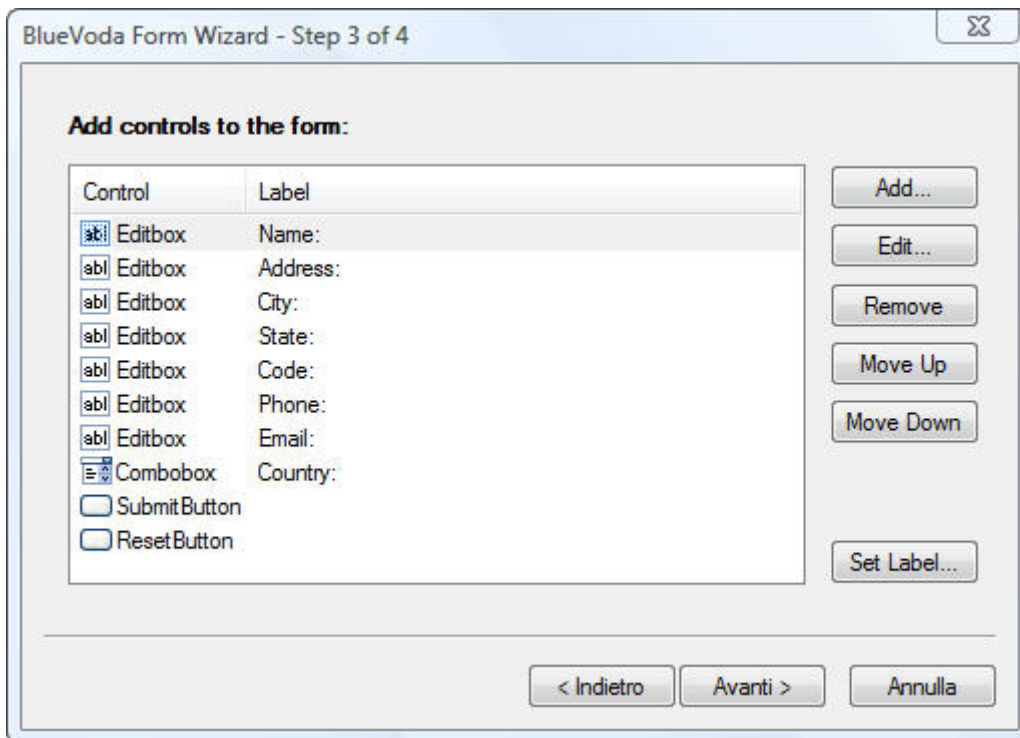
[Form Wizard Option 1: Create a new Form based on a template](#)

This is probably the most useful option of the Form Wizard. There is a number of readymade forms that you can select from, as you can see in this image:



Some of them are forms for specific functions, like Google Search, PayPal donation form, etc. You can also see that there are two forms intended for use through www.fombuddy.com and www.mailmyform.com . These two companies provide free (and, as upgrade, against a fee) form processing. In most cases, you will not need to process your form through these companies, as VodaHost provides you with all the necessary tools to achieve even the most difficult goals. However, in this tutorial we will examine a typical case of a contact form. So, click on the "Contact 2 " selection and then on "Next".

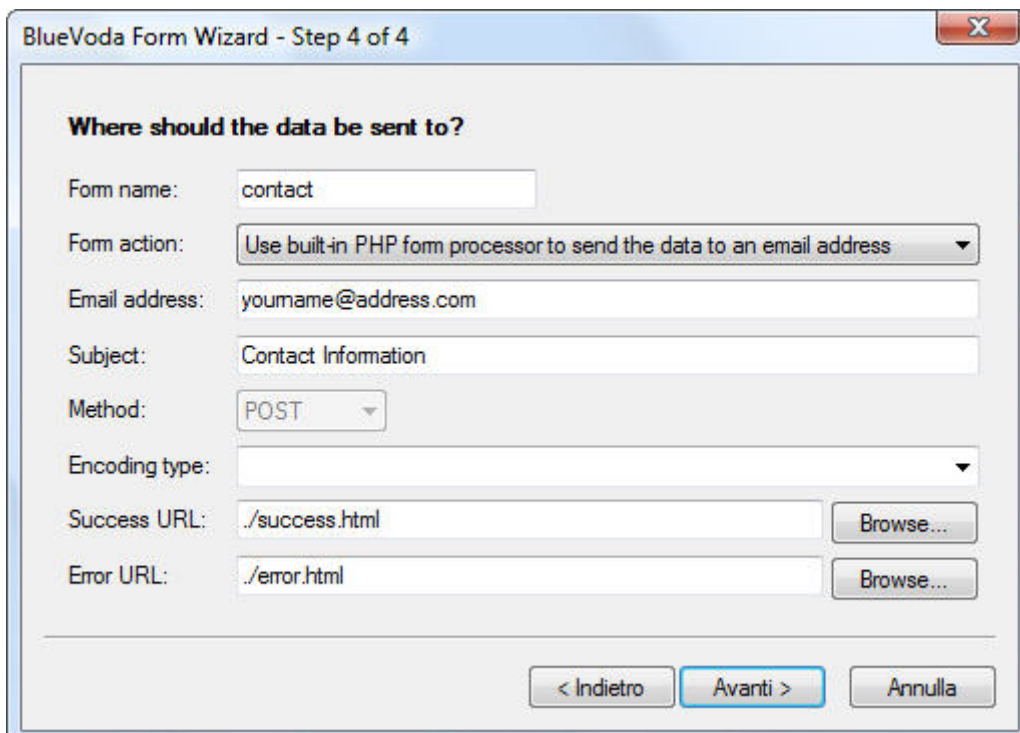
At this point the form controls dialog box will appear, as in the next image



What are “**Controls**” ? They simply are the fields of your form. And “**Labels**” are the pieces of text that will appear beside each field!. Already there, already aligned with the field itself. If you want to **Add** fields, simply click on “Add”. To Remove a field, select it and press Remove. That easy.

Of course, you can also change the “**Label**” and make it whatever you like.

You can also reorder the fields simply selecting them and clicking on **Move Up** or **Move Down**. When you are done, click on Next. You will see the following dialog box:



The field Form name simply contains a name for your form. Use ONLY web safe names, which means, NO WHITESPACES. If you need, you may use underscores like: contact_form . A name that contains whitespaces, will DISABLE the built in Javascript validation function.

For the purposes of this tutorial, we will suppose that you want what is commonly wanted by most users: you want the form info to be emailed to you

Please note that in the Form action field, you have the following options:

BlueVoda Form Wizard - Step 4 of 4

Where should the data be sent to?

Form name:

Form action:

Email address:

Subject:

Method:

Encoding type:

Success URL:

Error URL:

< Indietro Avanti > Annulla

No action:

Your submit button will do nothing, so don't use this option. It is only here for testing purposes, to see how your form actually looks like in your site, but having it disabled. There are some more things that you can do with this option and some custom made Javascript, but these are out of the scope of this tutorial.

Submit data to an email address:

This would seem the obvious choice, **but it is not**. Because, if you set it up like this, the visitor's browser will attempt to mail the form info using directly the email client (Outlook Express or any other). In **MOST** cases, depending on the specific computer settings, this procedure will FAIL. So, simply DON'T use this method.

Submit data to a page (script) in your own or an external website:

This is what actually ALL VodaHost customers were doing till now. They were creating a Thank you page, with some php code in it, to process the form. They were setting the form "action" to point to that page. The page needed to be published as php.

With BV10 this is not necessary any more. The only reason why you should be selecting this

option, is if you want to use a more advanced script, to achieve goals that the normal script included in the BlueVoda wizard will not allow you to, as: File upload, Database storage, autoresponder message etc. A script like this is, in example Advanced BlueVoda Form Processor.

So, if, for any reason, you DON'T want your form to be processed by the standard script, the form action should be pointed to that script directly

If you want to use this option, please have a look at (Video part Only)

[BlueVoda Form Tutorial 1](#) on how to setup your form, and also to [Advanced BlueVoda Form Processor](#)

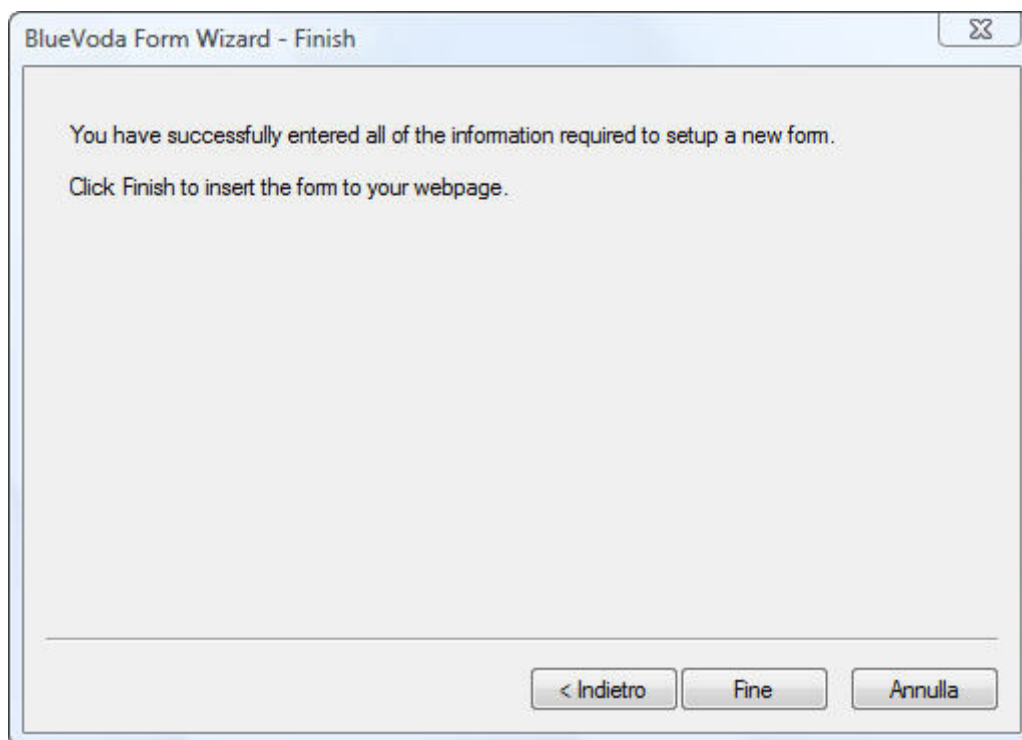
If you select his option, a field named "URL" will appear. You should fill in the URL of the page with this external script.

Use built in PHP form processor to send the data to an email address: *Yes, you got it!*

This is the one that will save you time and frustration! What will this option do for you ?

It will automatically embed in your form page a PHP form processor that will take care of sending you the necessary email to your own email address!. Not only, but it will automatically redirect to your Thank you page. Let's see how this is done.

Select the last option as we mentioned above. Fill in your email address, where you want to receive the mail, and press Next. In the next screen you will see a confirmation message, just click Finish.

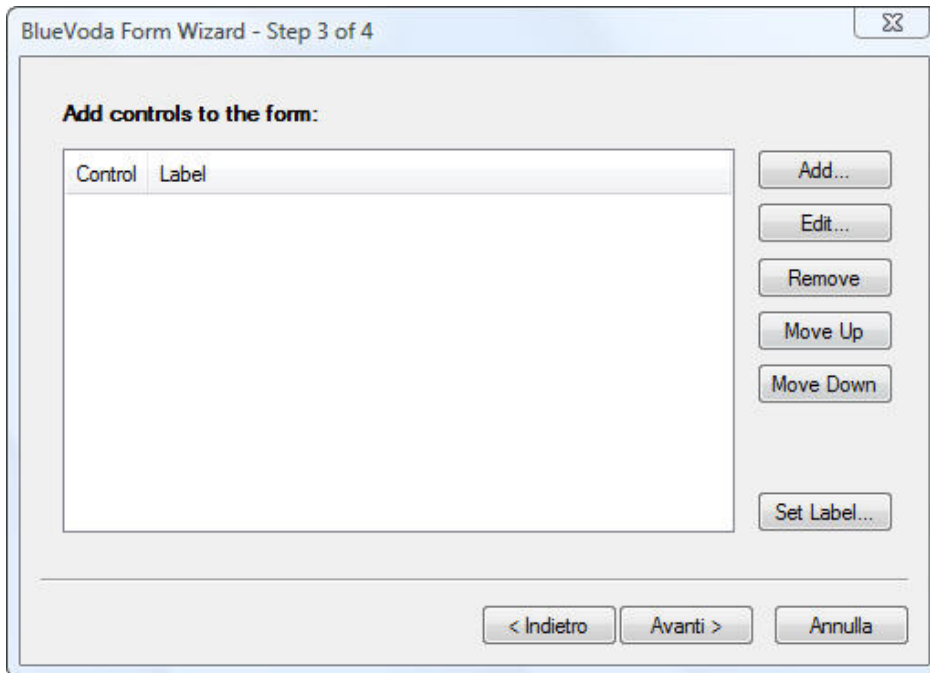


The form will appear in your page. Please note that you can stretch the form, add or remove fields, rename the fields, style them, add validation, change the labels, in other words you can do whatever you want, using the usual form tools. So we invite you to watch the [BlueVoda Form Tutorial 1](#) to see how you can do this.

Important note: Your page now has the PHP processor embedded, so it **NEEDS** to be published as PHP. If you have used the wizard, it will **AUTOMATICALLY** publish your page as PHP. So if your page is, in example, "contact", it will be published as "contact.php". Please take this into account, when linking your page in your menus.

Form Wizard Option2: Create a new Form from scratch using the wizard

This will take you to step 2 of the previous option, BUT no fields are present in your form:



Click on Add to add fields and the relevant labels, and proceed just as in the previous case

The major enhancement in the new Form wizard, which also applies to all BlueVoda forms independently from the way they have been built, is the **Built In Form Processor**. This form processor eliminates the need to copy / paste php code and manually create a processing page. The processing script is automatically embedded in your own form page, and it will process your form info correctly. It takes down to practically zero copy / paste mistakes that have caused lots of frustration to many users.

This script has been created with the contribution of DBTechnosystems and has the following enhancements, in comparison to the one used in the BV forms up to this moment:

1. It will automatically take care of file uploads
2. It will take care of Multiple choice Listboxes / Comboboxes
3. It will detect injection attempts and deny processing
4. It will report these errors if found
5. It allows you to specify the Upload folder and the max filesize
6. It will add a random prefix to the file uploaded, to avoid hackers uploading and running malicious files

Please note that these are essential features, for a more complete script that will provide much more both in terms of security and in terms of features, please visit the [Advanced BlueVoda Form Processor](#) thread.

Double click the form that is now in your page. The following Dialog Box will appear:

BlueVoda Form Wizard - Step 4 of 4

Where should the data be sent to?

Form name:

Form action:

Email address:

Subject:

Method:

Encoding type:

Success URL:

Error URL:

< Indietro Avanti > Annulla

As you can see, (**green arrow**) the “Use built in...” checkbox is checked, and the form action is already filled in. Leave these settings as they are, you will only change them if you want to use another processing script.

Your email address is already filled in (**yellow arrow**) . You can change it here if you want or if you need to change it in the future.

Thank you Page URL (**red arrow**): here you need to fill in the URL of the page where the visitor will be redirected after a successful submission. This only needs to be a simple html page, with a thank you (or confirmation, or whatever needs to be) message. However, it can be whatever page you want.

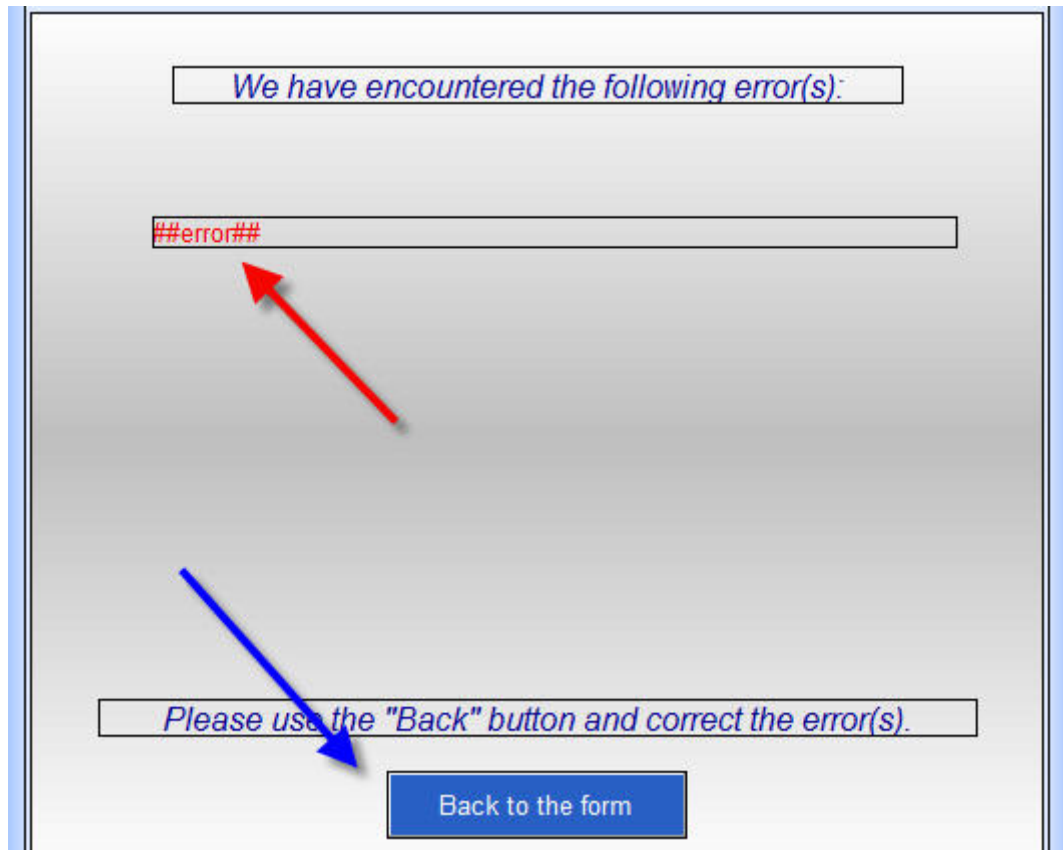
Error Page URL (**blue arrow**): here you need to fill in the URL of the error page. The new script performs injection control, to avoid your form script being used for spamming, as well as maximum filesize control, so that no file uploads will take place if the file size is bigger than the allowed size.

Creating an Error page

The new BV 10.1 built in form processor was developed by DB Technosystems.com. We have now embedded a simple error reporting system. To be able to report the errors, you need to correctly build an error page.

As we have designed the script, this is an extremely easy task: Create a page as you normally would. Leave some free space for the text of the error message. Then, place in your page the following simple text: **##error##**

As you see it in the following example:



If an error is found in your form, the error page will show up. The text `##error##` will be replaced by the actual error message. You can format the text as you like (Font type, size, color and position, alignment etc) . Make sure to make it LARGE enough (as you can see above) so that there is enough space for it.

Now, insert an ADVANCED button in your page. Double click it, Make it **OnClick**, and select onClick action: **Go to the Previous Page**. This button will enable your visitor to go back in your form and edit his input before submitting again.

Multiple Choice Listboxes / Comboboxes

Some times you need such fields. In Addition, there are some tomes that even checkboxes for the SAME choice, need to have multiple answers (values).

In order for the built in processor to correctly process these fields, there is only one requirement: the file names of these multiple choice fields MUST have at the end, `[]` (square brackets). In example, a field "How did you find us" should be "How did you find us[]" in order for the processor to be able to correctly process it. Of course, you also need to check the "Allow Multiple Selections" checkbox in the field Properties dialog box.

Uploading files.

The new processor allows you to upload files. Normally, the default settings allow a maximum filesize of 1 Mb and the files will be uploaded in a subfolder that is AUTOMATICALLY created, which is named "uploads".

For security reasons, it is advisable that you CHANGE the default upload folder name.

You may also want to change the default maximum filesize, from 1 Mb (1024 Kb) to a lower or higher number.

BOTH these task are achieved through HIDDEN FIELDS.

Double click your form, and in the lower part, in the Hidden Fields section, add these two fields:

filesize (all lowercase) and **upload_folder** (all lowercase).

The filesize MUST be typed in Kbytes.

Please look at the example picture here below:

The screenshot shows the 'Form Properties' dialog box with the 'General' tab selected. The 'Form Name' is 'Contact_Form', the 'Action' is '<? echo(\$_SERVER['PHP_SELF']);?>', the 'Method' is 'POST', and the 'Encoding type' is 'multipart/form-data'. Under 'Form processing', the checkbox 'Use built-in PHP form processor to send the data to an email address.' is checked. The 'Email address' is 'info@yourdomain.com', the 'Subject' is 'Website form', and the 'Message' is 'Values submitted from web site form:'. The 'Success URL' is 'thankyou_page.html' and the 'Error URL' is 'errorpage12.html'. In the 'Hidden Fields' section, there is a table with two rows: 'filesize' with value '100' and 'upload_folder' with value 'my_upload_folder_name'. A red arrow points to the '100' value, and a blue arrow points to the 'my_upload_folder_name' value. The 'Add...', 'Edit...', and 'Delete' buttons are visible to the right of the table. The 'OK' and 'Annulla' buttons are at the bottom.

Name	Value
filesize	100
upload_folder	my_upload_folder_name

Give your upload folder a strange name, for security reason. Something like "25Fkgb_my_Folder" mixing letters and numbers. Remember, at times there are malicious persons that upload dangerous files in your site, DON'T open a file if you don't check it first. NEVER open or run a .exe , .php or ANY other executable file in your site!! unless you are

absolutely sure of the sender and the file content. It is advisable to download it on your computer, examine it, and then decide if you should open (run) it or not.

That's all, have fun. Post here for whatever problem you might have.